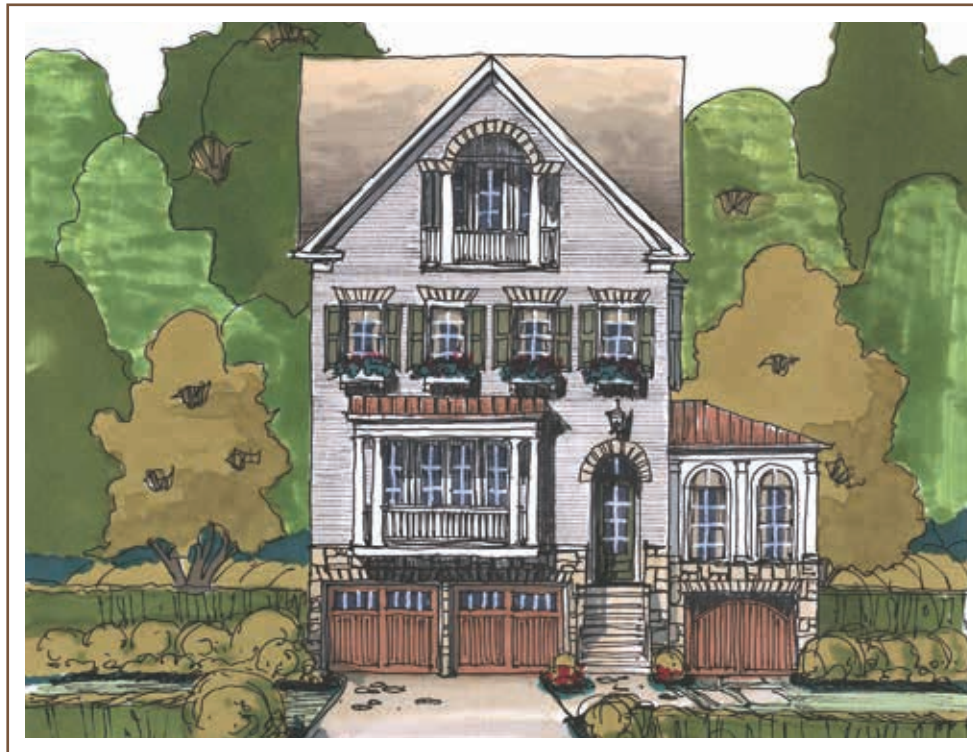


PV
PACES VIEW

THE BRITTANY

4749+ SQ. FT. — 4 BD, 4.5 BA



HOMESITE 23

OFFERED AT \$ _____

- LUXURIOUS SINGLE FAMILY HOME IN THE HEART OF VININGS
- LIGHT-FILLED SUNROOM WITH FLOOR TO CEILING WINDOWS
- ELEVATOR SERVICES ALL LEVELS
- AMAZING OUTDOOR SKY TERRACE WITH FIREPLACE
- FINISHED TERRACE LEVEL WITH FOURTH BEDROOM OR OFFICE
- THREE CAR GARAGE AND ADDITIONAL STORAGE
- PACES VIEW IS A GATED RESORT STYLE AMENITIES NEIGHBORHOOD INCLUDING A POOL, CLUBHOUSE AND FITNESS CENTER



PACES VIEW
3851 PACES LOOKOUT DRIVE
ATLANTA, GA 30339
404-693-5634
JWCATLANTA.COM

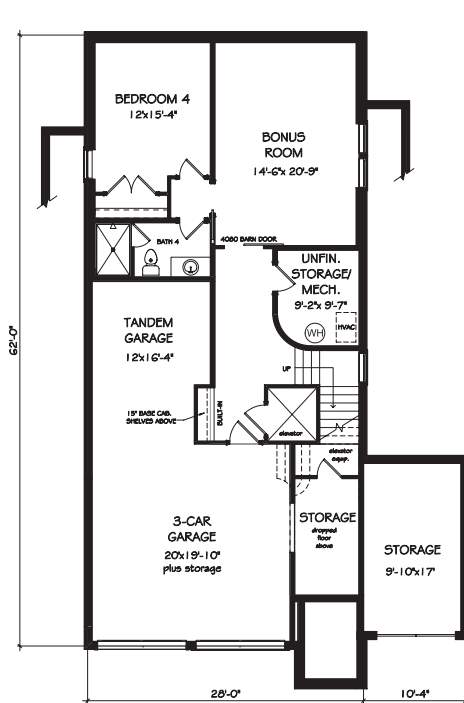
URBAN • WALKABLE • REFINED

SALES BY JW COLLECTION BROKERS, LLC. SUBJECT TO CHANGES, ERRORS AND OMISSIONS. 2802-14-0519

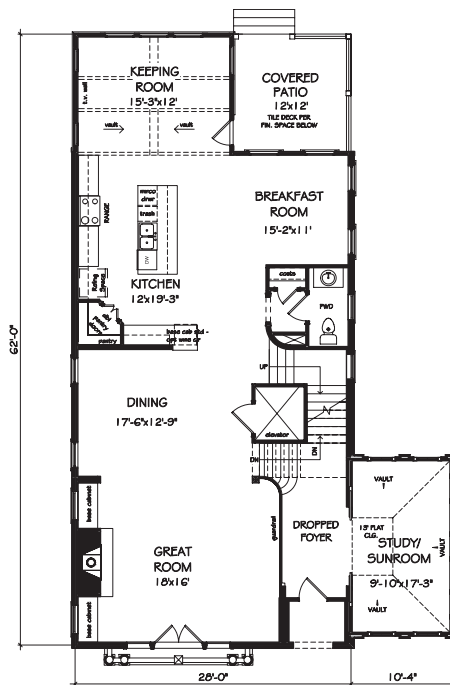
Paces View

THE BRITTANY

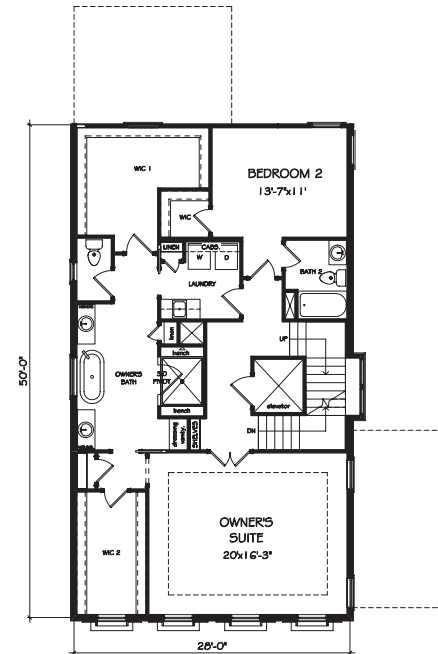
4749+ SQ. FT. — 4 BD, 4.5 BA



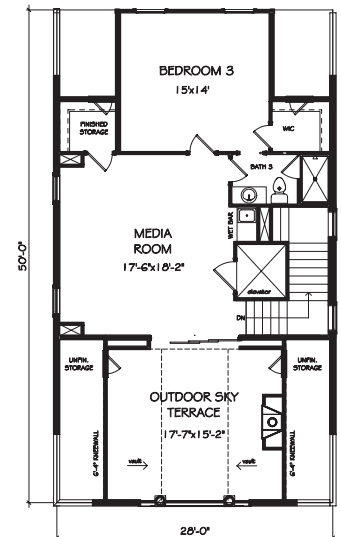
TERRACE LEVEL



FIRST FLOOR



SECOND FLOOR



THIRD FLOOR



PACES VIEW
 3851 PACES LOOKOUT DRIVE
 ATLANTA, GA 30339
 404-693-5634
 JWCATLANTA.COM

URBAN • WALKABLE • REFINED

SALES BY JW COLLECTION BROKERS, LLC. SUBJECT TO CHANGES, ERRORS AND OMISSIONS. 2802-14-0519