

THE *Enclave*  
ON COLLIER.

THE BRIARCLIFF

3164+ SQ. FT. — 3 BD, 3.5 BA



HOMESITE 52

HOMESITE 53

HOMESITE 54

FEATURES AND AMENITIES:

- THREE-STORY TOWNHOMES WITH OPTIONAL ELEVATOR
- SPACIOUS MAIN LEVEL WITH GREAT ROOM, DINING ROOM, GOURMET KITCHEN, BREAKFAST AREA AND DECK
- SECOND STORY OWNER'S SUITE, LAUNDRY AND ADDITIONAL BEDROOM WITH FULL BATH
- TERRACE LEVEL MEDIA ROOM, BEDROOM WITH FULL BATH AND EXTRA STORAGE SPACE
- THREE-CAR GARAGE
- EARTH CRAFT-CERTIFIED GATED HOMES AND TOWNHOMES IN THE HEART OF COLLIER HILLS CENTERED ON A PRIVATE PARK AND PAVILION



THE ENCLAVE ON COLLIER

2092 TIMBALL ROAD

ATLANTA, GA 30318

404-276-9108

JWCATLANTA.COM

URBAN • WALKABLE • REFINED

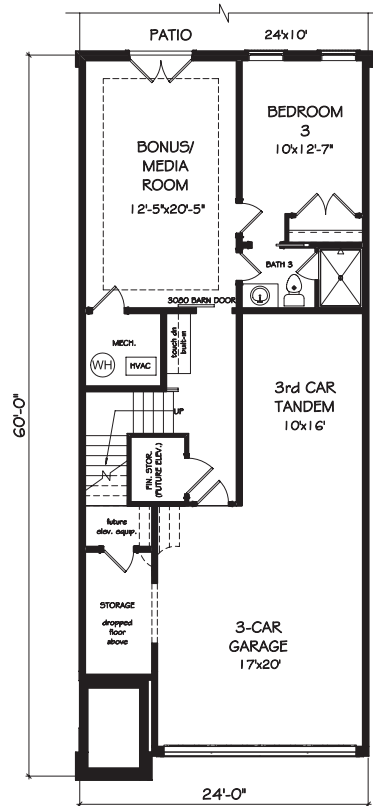
SALES BY JW COLLECTION BROKERS, LLC. SUBJECT TO  
CHANGES, ERRORS AND OMISSIONS. 2824-28-0119



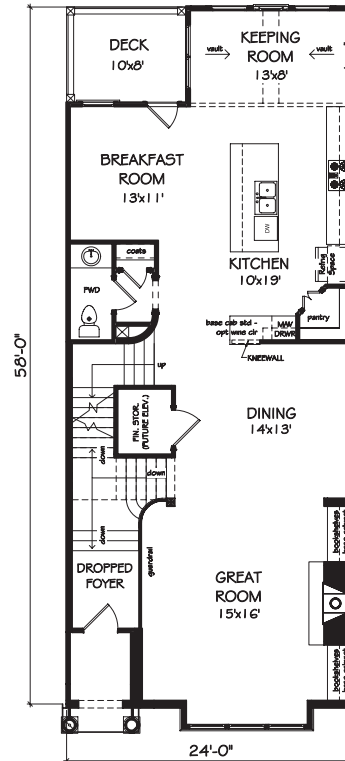
THE *Enclave*  
ON COLLIER.

THE BRIARCLIFF

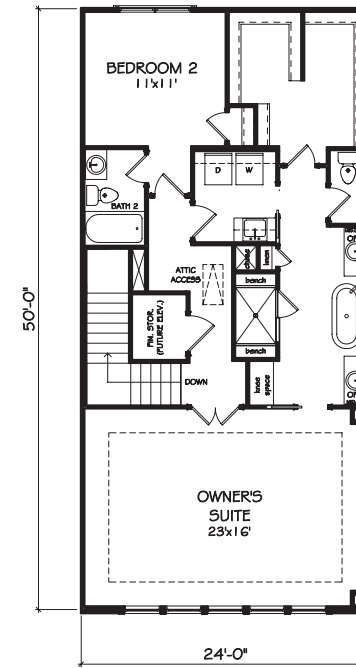
3164+ SQ. FT. — 3 BD, 3.5 BA



TERRACE LEVEL



FIRST FLOOR



SECOND FLOOR



THE ENCLAVE ON COLLIER  
2092 TIMBALL ROAD  
ATLANTA, GA 30318  
404-276-9108  
JWCATLANTA.COM

URBAN • WALKABLE • REFINED

SALES BY JW COLLECTION BROKERS, LLC. SUBJECT TO  
CHANGES, ERRORS AND OMISSIONS. 2824-28-0119

