

THE *Enclave*
ON COLLIER.

THE BRIDGEPORT

3900+ SQ. FT. — 3 BD, 4.5 BA



HOME FEATURES

- FOUR-STORY LUXURY TOWNHOME WITH ELEVATOR INCLUDED
- SPACIOUS GREAT ROOM WITH FIREPLACE SURROUNDED BY CUSTOM BUILT-INS
- COOK'S ISLAND KITCHEN WITH KEEPING ROOM OPENS TO BREAKFAST AREA AND GRILL DECK
- FORMAL DINING ROOM
- LUXURIOUS OWNER'S SUITE OPENS TO SPA BATH WITH LARGE SHOWER, FREESTANDING SOAKING TUB, DUAL VANITIES AND WALK-IN CLOSET
- THIRD FLOOR INCLUDES ADDITIONAL BEDROOM WITH FULL BATH, BONUS ROOM
- PRIVATE SKY TERRACE WITH OPTIONAL FIREPLACE PERFECT FOR ENTERTAINING
- TWO-CAR GARAGE WITH STORAGE SPACE

OFFERED AT \$ _____ OFFERED AT \$ _____ OFFERED AT \$ _____



THE ENCLAVE ON COLLIER
1115 CORDIA AVENUE
ATLANTA, GA 30318
404-276-9108
JWCATLANTA.COM

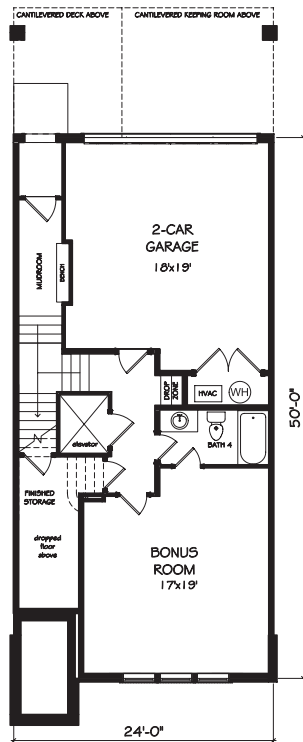
URBAN • WALKABLE • REFINED

SALES BY JW COLLECTION BROKERS, LLC. SUBJECT TO CHANGES, ERRORS AND OMISSIONS. 2824-32

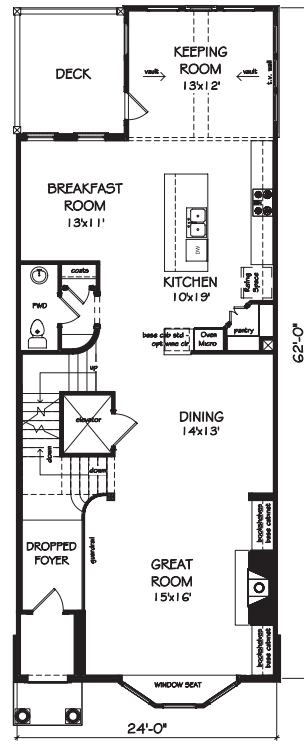
THE *Enclave*
ON COLLIER.

THE BRIDGEPORT

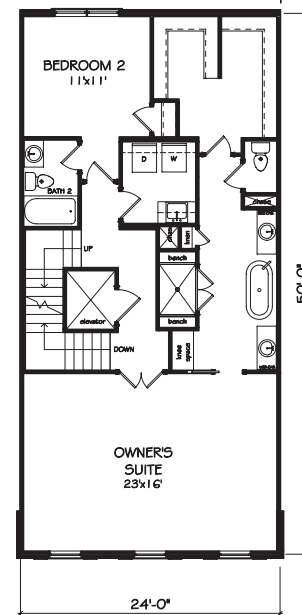
3900+ SQ. FT. — 3 BD, 4.5 BA



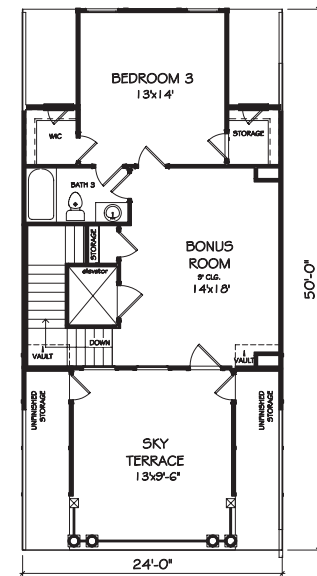
TERRACE LEVEL



FIRST FLOOR



SECOND FLOOR



THIRD FLOOR



THE ENCLAVE ON COLLIER
1115 CORDIA AVENUE
ATLANTA, GA 30318
404-276-9108
JWCATLANTA.COM

URBAN • WALKABLE • REFINED

SALES BY JW COLLECTION BROKERS, LLC. SUBJECT TO CHANGES, ERRORS AND OMISSIONS. 2824-32