

THE *Enclave*
ON COLLIER

THE RICHARDSON

3900+ SQ. FT. — 4 BD, 4.5 BA



HOMESITE #5

OFFERED AT \$ _____

- FOUR-STORY DESIGN WITH ELEVATOR INCLUDED
- SPACIOUS OPEN FLOORPLAN DESIGN
- ISLAND KITCHEN WITH CUSTOM CABINETRY AND CONNECTION TO COVERED DECK
- SEPARATE DINING ROOM AND PRIVATE STUDY
- LUXURIOUS OWNER'S SUITE WITH SPA BATH AND OVERSIZED WALK-IN CLOSET
- FANTASTIC OUTDOOR SKY TERRACE ON TOP LEVEL WITH BONUS ROOM AND ADDITIONAL BED AND BATH
- FINISHED TERRACE LEVEL
- THREE-CAR GARAGE WITH MUD ROOM ENTRY



URBAN • WALKABLE • REFINED

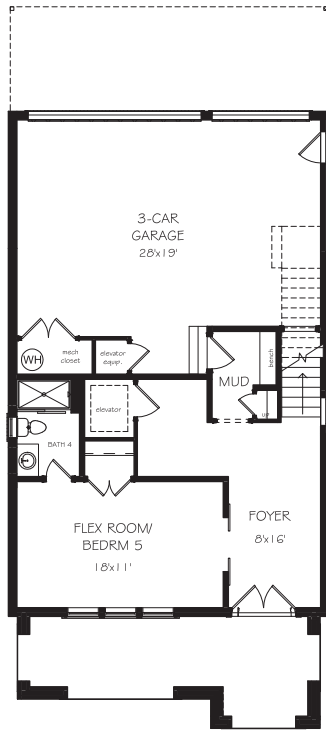
THE ENCLAVE ON COLLIER
1115 CORDIA AVENUE
ATLANTA, GA 30318
404-276-9108
JWCATLANTA.COM

SALES BY JW COLLECTION BROKERS, LLC. SUBJECT TO
CHANGES, ERRORS AND OMISSIONS.2824-32

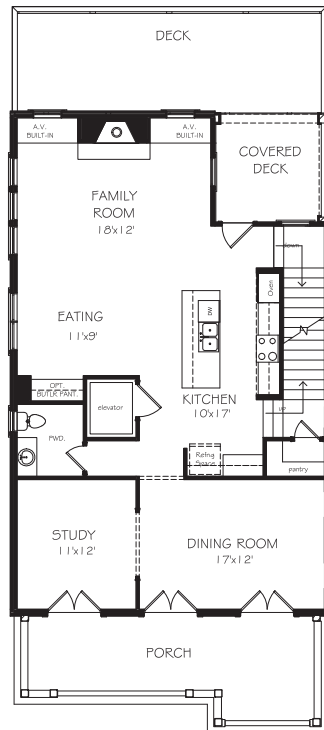
THE *Enclave*
ON COLLIER

THE RICHARDSON

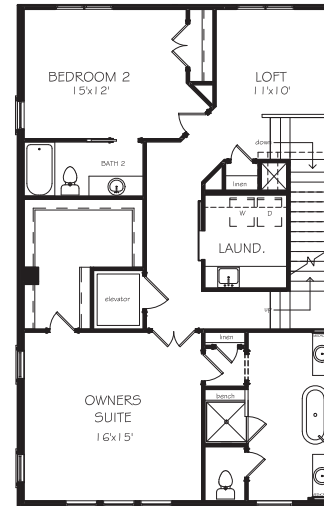
3900+ SQ. FT. — 4 BD, 4.5 BA



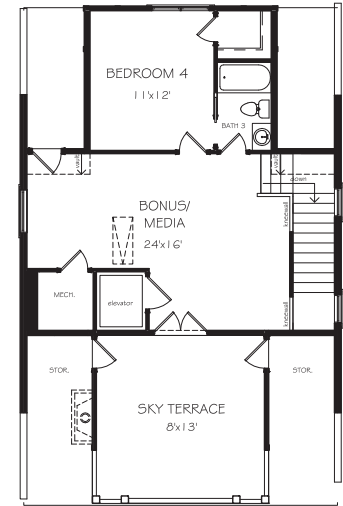
TERRACE LEVEL



FIRST FLOOR



SECOND FLOOR



THIRD FLOOR



THE ENCLAVE ON COLLIER
1115 CORDIA AVENUE
ATLANTA, GA 30318
404-276-9108
JWCATLANTA.COM

URBAN • WALKABLE • REFINED

SALES BY JW COLLECTION BROKERS, LLC. SUBJECT TO
CHANGES, ERRORS AND OMISSIONS.2824-32