

THE *Enclave*
ON COLLIER.

THE HAMPSHIRE

4535+ SQ. FT. — 4 BD, 4.5 BA

HOMESITE #6

OFFERED AT \$ _____



- SPACIOUS, OPEN MAIN LIVING LEVEL WITH SPACIOUS GREAT ROOM AND DINING ROOM
- COOK'S ISLAND KITCHEN WITH LARGE CORNER PANTRY OVERLOOKS BREAKFAST ROOM AND KEEPING ROOM
- LUXURIOUS OWNER'S SUITE WITH SPA BATH
- CONVENIENT SECOND FLOOR LAUNDRY
- THIRD FLOOR WITH BONUS OR MEDIA ROOM AND OUTDOOR SKY TERRACE AS WELL AS ADDITIONAL BEDROOM AND FULL BATH
- TERRACE LEVEL WITH BONUS ROOM OR FOURTH BEDROOM AND FULL BATH
- THREE-CAR GARAGE WITH MUD ROOM ENTRY
- ELEVATOR INCLUDED



THE ENCLAVE ON COLLIER
1115 CORDIA AVENUE
ATLANTA, GA 30318
404-276-9108
JWCATLANTA.COM

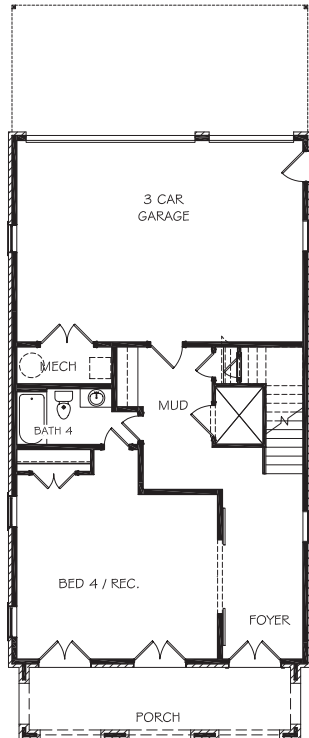
URBAN • WALKABLE • REFINED

SALES BY JW COLLECTION BROKERS, LLC. SUBJECT TO CHANGES, ERRORS AND OMISSIONS. 2824-32

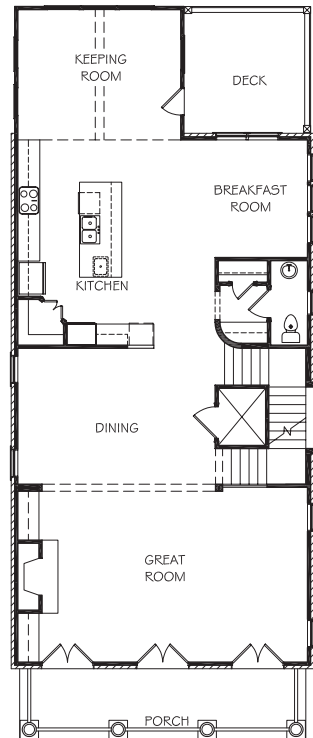
THE *Enclave*
ON COLLIER.

THE HAMPSHIRE

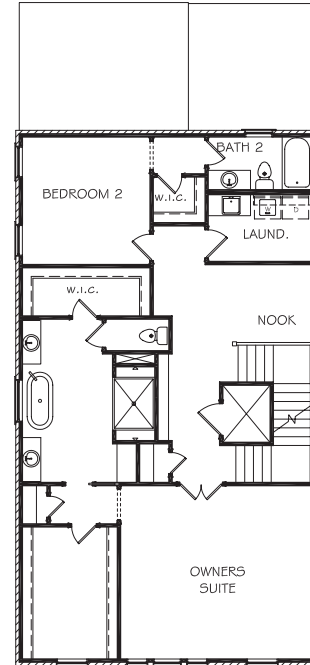
4535+ SQ. FT. — 4 BD, 4.5 BA



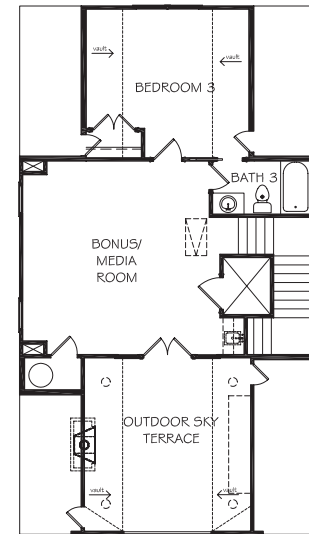
TERRACE LEVEL



FIRST FLOOR



SECOND FLOOR



THIRD FLOOR



THE ENCLAVE ON COLLIER
1115 CORDIA AVENUE
ATLANTA, GA 30318
404-276-9108
JWCATLANTA.COM

URBAN • WALKABLE • REFINED

SALES BY JW COLLECTION BROKERS, LLC. SUBJECT TO CHANGES, ERRORS AND OMISSIONS. 2824-32