

THE *Enclave*
ON COLLIER

THE GRANT

4830+ SQ. FT. — 5 BD, 5.5 BA



HOMESITE #23

OFFERED AT \$ _____

- ELEGANT DESIGN WITH LARGE FRONT PORCH
- OPEN MAIN LIVING LEVEL WITH COOK'S KITCHEN, GREAT ROOM, FORMAL DINING ROOM AND STUDY
- OWNER'S SUITE WITH SPA BATH, DUAL WALK-IN CLOSETS AND PRIVATE BALCONY
- UPPER LEVEL WITH PRIVATE GUEST SUITE AND LARGE MEDIA OR GAME ROOM OPENING TO SPECTACULAR OUTDOOR SKY TERRACE
- FINISHED TERRACE LEVEL WITH LARGE BONUS ROOM AND ADDITIONAL BEDROOM WITH FULL BATH
- THREE-CAR GARAGE WITH MUD ROOM ENTRY
- ELEVATOR INCLUDED



URBAN • WALKABLE • REFINED

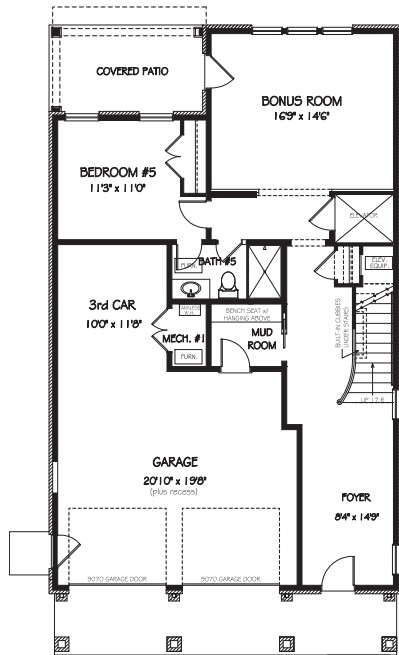
THE ENCLAVE ON COLLIER
1115 CORDIA AVENUE
ATLANTA, GA 30318
404-276-9108
JWCATLANTA.COM

SALES BY JW COLLECTION BROKERS, LLC. SUBJECT TO
CHANGES, ERRORS AND OMISSIONS. 2824-32

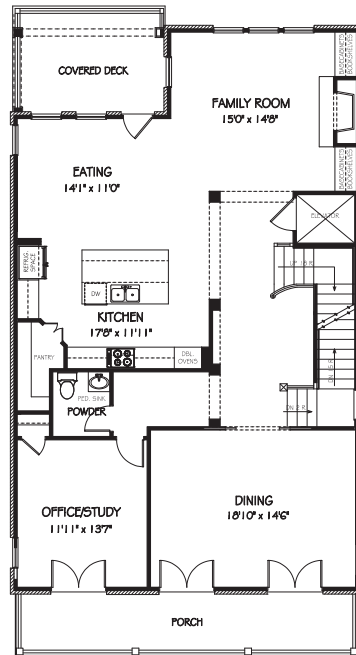
THE *Enclave*
ON COLLIER.

THE GRANT

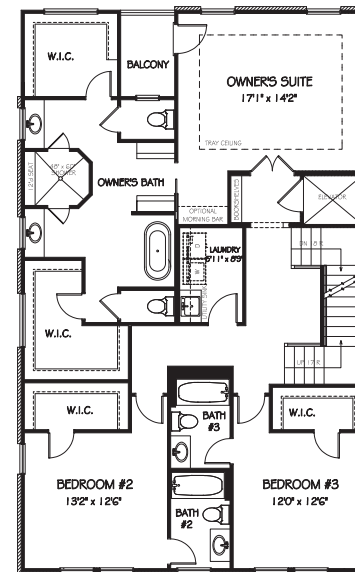
4830+ SQ. FT. — 5 BD, 5.5 BA



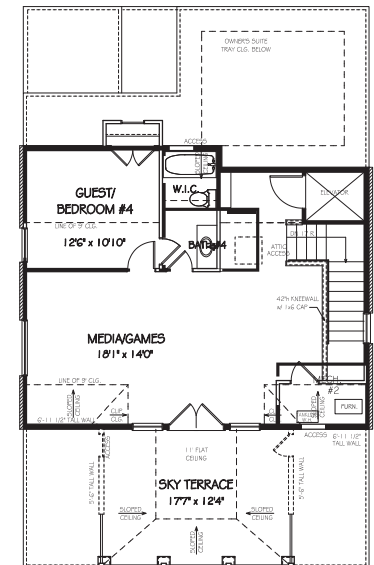
TERRACE LEVEL



FIRST FLOOR



SECOND FLOOR



THIRD FLOOR



THE ENCLAVE ON COLLIER
1115 CORDIA AVENUE
ATLANTA, GA 30318
404-276-9108
JWCATLANTA.COM

URBAN • WALKABLE • REFINED

SALES BY JW COLLECTION BROKERS, LLC. SUBJECT TO
CHANGES, ERRORS AND OMISSIONS. 2824-32