

THE *Enclave*
ON COLLIER.

THE GEORGIAN

4400+ SQ. FT. — 5 BD, 5.5 BA



- SPACIOUS MAIN LEVEL WITH GREAT ROOM, COOK'S KITCHEN, DINING ROOM AND PRIVATE STUDY
- OWNER'S SUITE WITH SPA BATH AND DUAL WALK-IN CLOSETS
- LARGE SECONDARY BEDROOMS EACH WITH FULL BATH
- LOFT AREA
- UPPER LEVEL OFFERS LARGE ENTERTAINMENT AREA AND SPECTACULAR OUTDOOR SKY TERRACE
- FINISHED LOWER TERRACE LEVEL WITH MEDIA ROOM, ADDITIONAL BEDROOM AND FULL BATH
- THREE-CAR GARAGE



THE ENCLAVE ON COLLIER
1115 CORDIA AVENUE
ATLANTA, GA 30318
404-276-9108
JWCATLANTA.COM

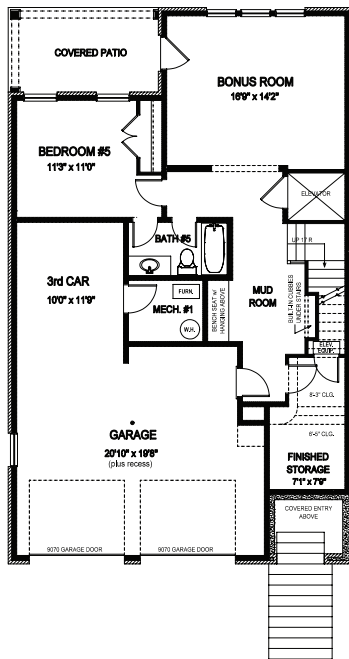
URBAN • WALKABLE • REFINED

SALES BY JW COLLECTION BROKERS, LLC. SUBJECT TO
CHANGES, ERRORS AND OMISSIONS. 2824-32

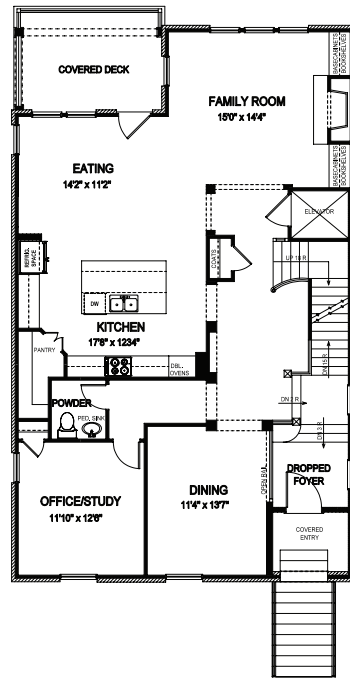
THE *Enclave*
ON COLLIER.

THE GEORGIAN

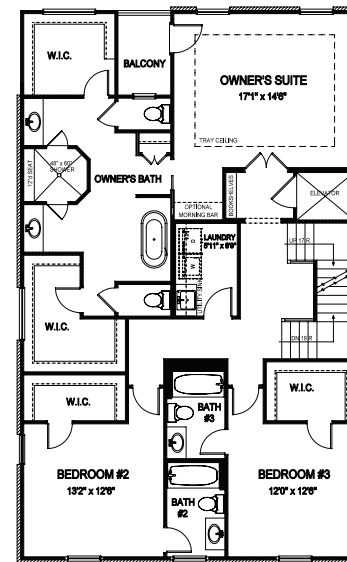
4400+ SQ. FT. — 5 BD, 5.5 BA



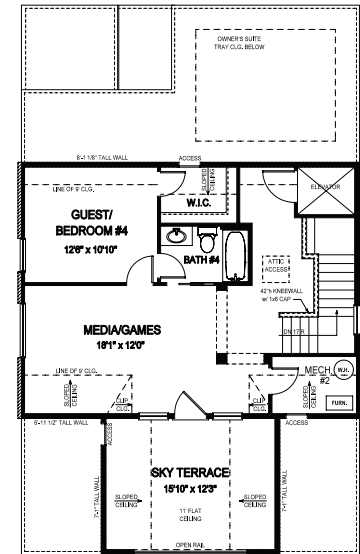
TERRACE LEVEL



FIRST FLOOR



SECOND FLOOR



THIRD FLOOR



THE ENCLAVE ON COLLIER
1115 CORDIA AVENUE
ATLANTA, GA 30318
404-276-9108
JWCATLANTA.COM

URBAN • WALKABLE • REFINED

SALES BY JW COLLECTION BROKERS, LLC. SUBJECT TO
CHANGES, ERRORS AND OMISSIONS. 2824-32