

THE *Enclave*
ON COLLIER

THE BRENTWOOD

3550+ SQ. FT. — 4 BD, 3.5 BA



HOMESITE #14

OFFERED AT \$ _____

- ELEGANT THREE-STORY DESIGN
- SPACIOUS OPEN FLOORPLAN
- ISLAND KITCHEN WITH CUSTOM CABINETRY OVERLOOKS EATING, KEEPING ROOM AND GREAT ROOM
- LUXURIOUS OWNER'S SUITE WITH SITTING ROOM AND SPA BATH WITH DUAL VANITIES, SOAKING TUB AND DUAL WALK-IN CLOSETS
- SECOND FLOOR LOFT
- FINISHED THIRD FLOOR WITH LARGE BONUS OR MEDIA ROOM, OFFICE AND ADDITIONAL BEDROOM AND FULL BATH
- TWO-CAR GARAGE



THE ENCLAVE ON COLLIER
1115 CORDIA AVENUE
ATLANTA, GA 30318
404-276-9108
JWCATLANTA.COM

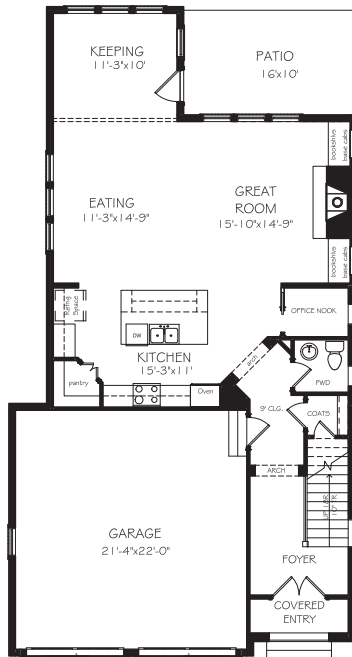
URBAN • WALKABLE • REFINED

SALES BY JW COLLECTION BROKERS, LLC. SUBJECT TO
CHANGES, ERRORS AND OMISSIONS. 2824-32

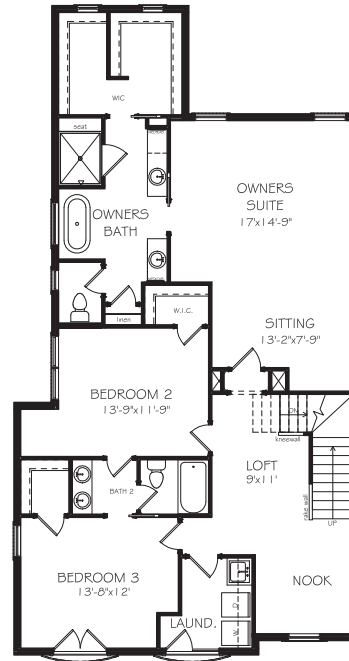
THE *Enclave*
ON COLLIER

THE BRENTWOOD

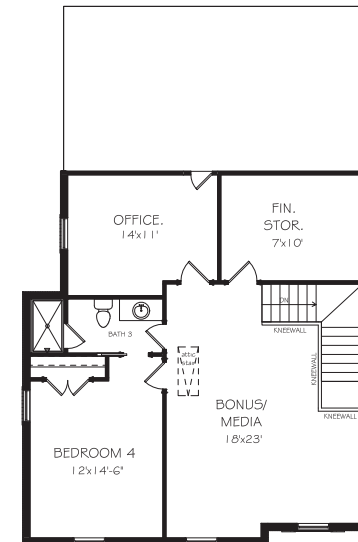
3550+ SQ. FT. — 4 BD, 3.5 BA



FIRST FLOOR



SECOND FLOOR



THIRD FLOOR



THE ENCLAVE ON COLLIER
1115 CORDIA AVENUE
ATLANTA, GA 30318
404-276-9108
JWCATLANTA.COM

URBAN • WALKABLE • REFINED

SALES BY JW COLLECTION BROKERS, LLC. SUBJECT TO
CHANGES, ERRORS AND OMISSIONS. 2824-32